

INTERIOR  
DESIGN®

**LAUNCH™**





## M0001

### *Hubble Bubble*

DESIGNED BY MARCEL  
WANDERS

POWERED THROUGH  
PROPRIETARY ELECTRO-  
SANDWICH TECHNOLOGY

AVAILABLE WITH 7 OR 11  
SPHERES

FROSTED OR OIL-  
IRIDESCENT GLASS



LAUNCH™



**Hey, designers:** They say good things come in threes—so here it is—LAUNCH issue #3. For those just tuning in, let me catch you up real quick!

LAUNCH is our way of bringing you, our designer friends, a curated magazine with an editorial feel—thanks to my super editorial team—alongside technology that connects you to products from your favorite manufacturers faster than you ever thought possible.

Here's how it works: **Just tap the LAUNCH CODES™** featured throughout. The codes automatically open an interface where you can take immediate action, like visit a website or Instagram account, get a PDF, or request a sample. Or, if you're just browsing, you can save the product for later or forward it to someone else.

## into the future

More than 20,000 design professionals have taken action with LAUNCH, and we're just getting started. Want to see what we've featured? Check it out at [interiordesign.net/LAUNCH](http://interiordesign.net/LAUNCH).

Let me know what you think! Drop me a line at [hellocindy@interiordesign.net](mailto:hellocindy@interiordesign.net).

Love,

A stylized, handwritten signature in black ink that reads "Cindy".

Cindy Allen  
and the *Interior Design* editors

*P.S. Just a reminder: If a LAUNCH product is available through Material Bank, and you're a member, you can order a sample with the touch of a button, up until midnight, and get it by 10AM the following day. In fact, you can order as many samples from as many different LAUNCH partners as you like, and get them all in the same box!*



# EDITORS' PICKS



## STANDOUTS

4 SHAPES

3 MATERIAL OPTIONS

CUSTOM POWDER-COAT  
TO MATCH BRAND  
COLORS

LOCKING CASTERS

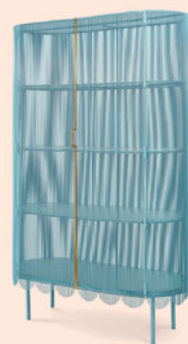
### **DUTCH INVERTUALS** *Room Divider*

Establish boundaries with custom mobile partitions—for offices, restaurants, and health facilities—designed by Wendy Plomp's Eindhoven-based studio. Through Darran (in the U.S.).

[darran.com](http://darran.com); [dutchinvertuals.nl](http://dutchinvertuals.nl)


**SCARLET SPLENDOUR** *Strings*

Full disclosure: Slovenian designer Nika Zupanc's see-through cabinet for the Indian brand is stronger than it appears, crafted as it is of soothing blue steel. [scarletsplendour.com](http://scarletsplendour.com)


**STANDOUTS**

COLLECTION INCLUDES  
VANITY, POUF, AND  
SOFA

WAVE PATTERN AT  
BOTTOM

GOLD AND GOLD/SILVER  
COLOR ALTERNATIVES

48.5 X 22 X 77"



**MODEL NO. 116**

Hang low with a stout coffee table, its integrated storage compartment printed in ombré mauve or black eco-friendly plant resin and topped with sustainably sourced hardwood. *model-no.com*



**STANDOUTS**

INDIVIDUALLY CRAFTED  
CUSTOMIZABLE  
7 BODY COLOR OPTIONS  
4 TOP SHAPES



**STANDOUTS**

FOR CONTRACT AND  
HOSPITALITY

ARM/BACKREST  
ATTACHES TO SEAT VIA  
A SINGLE JOINT

FLAME-RETARDANT  
POLYURETHANE FOAM  
INTERIOR

**MOROSO** *Ruff*

Take a seat on Hall of Fame member Patricia Urquiola's perfectly balanced armchair, a tribute to the late Spanish sculptor Eduardo Chillida, known for his monumental abstractions. [moroso.it](http://moroso.it)



## CC-TAPIS *Lines*

Wax crayon sketches of varied-width lines sparked Philippe Malouin's irregular rug pattern—its intentional waver the result of switching weavers midway through the process.

[cc-tapis.com](http://cc-tapis.com)



### STANDOUTS

EACH RUG IS UNIQUE

DIP-DYED HIMALAYAN  
WOOL

HANDMADE IN NEPAL





**STANDOUTS**AMERICAN WALNUT  
BASE AND FEETKVADRAT UPHOLSTERY  
FABRIC OR COM

HANDCRAFTED

**MERVE KAHRAMAN PRODUCTS & INTERIORS** *Beice*

According to the New York- and Istanbul-based designer, this three-seater and matching armchair upholstered in pastel hues (mint green, pink, etc.) feel like sitting on cotton candy clouds.

[mervekahraman.com](http://mervekahraman.com)

## SAVOIR BEDS *Sky*

The bed's headboard and base are upholstered in dyed leather by British hide specialist Bill Amberg, who harnessed an advanced digital printing technique that enables deeper dye penetration. [savourbeds.com](http://savourbeds.com)



### STANDOUTS

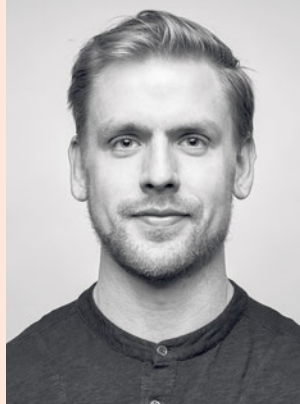
BRASS LEGS

BLUE, GOLD, OR BLACK  
COLORWAYS

BESPOKE






**WISSE TROOSTER** *Circular*

The Dutch designer transforms recycled materials including sustainable acrylics and plastic sheet (repurposed from discarded cutting boards and yogurt cups) into playful wall lamps. [qoowl.com](http://qoowl.com)


**STANDOUTS**

LED FILAMENT TUBES  
COMPONENTS CAN BE  
REUSED OR RECYCLED  
3 EDITIONS: SMALL,  
LARGE, AND DOUBLE





**STANDOUTS**

KILIM TECHNIQUE

100% WOOL

67 X 94.5"  
AND 79 X 118"

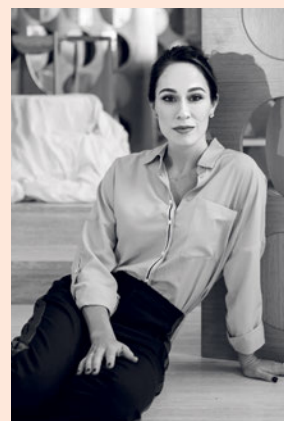
**TACTO** *Caminos*

Embroidered lines take us on a journey across the pleasingly tactile beige or green rug—named after the Spanish word for “paths”—by Valencia-based design duo Yonoh. [tactorugs.com](https://tactorugs.com)



**ANA VOLANTE STUDIO** *Arc*

From the Venezuelan designer's Moon collection, a handcrafted side table inspired by Brutalism sports double-arc base components representing lunar shadows. [anavolante.com](http://anavolante.com)

**STANDOUTS**

35" ACROSS

BALTIC BIRCH PLYWOOD

QUARTER-SAWN WHITE  
OAK VENEERSTAINLESS-STEEL AND  
BRASS INLAYS





**STANDOUTS**

5 PATTERNS, 48 COLORS

BLEACH CLEANABLE

MULTI-USE

54 INCHES WIDE

AMERICAN MADE

**KNOLLTEXTILES** *Alias II*

From the 24/7 Extreme Performance wall covering line conceived for high-traffic interiors, a modern-minded textile crafted of woven polyethylene tape yarn is inherently strong, dimensionally stable, and PVC free. [knolltextiles.com](http://knolltextiles.com)



**EXTREMIS****Hopper AA**

A pass-through zone at each corner of the mono-material picnic table eliminates the need to climb over the angular benches to access the tabletop.

[extremis.com](http://extremis.com)

**STANDOUTS**

POWDER-COATED  
ALUMINUM

5 COLORS, 3 SIZES

OPTIONAL SHADE

DESIGNED BY  
DIRK WYNANTS





**STANDOUTS**

12 MODULE STYLES

PLYWOOD FRAME

FABRIC OR LEATHER  
UPHOLSTERY

ONLINE PLANNER/  
CONFIGURATOR



**SCANDINAVIAN SPACES BOB**

This reconfigurable seating system is the very definition of versatility: Interconnecting modules can be individually upholstered, fitted with optional power/USB connection, and interspersed with coordinating tables or even acoustic screens. [scandinavianspaces.com](http://scandinavianspaces.com)



**STANDOUTS**

AMERICAN MADE  
FULLY CUSTOMIZABLE  
12 FINISHES  
HUNDREDS OF HANDLE  
OPTIONS

**ROCKY MOUNTAIN HARDWARE** *Bronze RFID Hardware*

Elevate any lodging security system with the welcoming, organic warmth of solid art-grade bronze hardware—which is fully customizable courtesy of numerous escutcheon styles, lever options, and finishes. [rockymountainhardware.com](http://rockymountainhardware.com)







**STANDOUTS**

DESIGNED BY SAMULI  
NAAMANKA

23 STANDARD WOOD  
FINISHES

16 POWDERCOATS

UPHOLSTERED PLYWOOD  
SHELL

SWIVEL BASE OFFERED  
WITH CASTERS OR GLIDES

**SOURCE INTERNATIONAL** *Mojo*

This small-scale multipurpose chair with a simple, modern form suits any space—office, home, hospitality—and can be specified with bent-plywood or steel legs or a height-adjustable aluminum swivel base.

[sourceinternationaldesign.com](http://sourceinternationaldesign.com)



**STANDOUTS**

SOUND-ABSORBENT WOOL  
FELT OR FLEXIBLE WOOD  
EXTERIOR

66 WOOL FELT COLORS

AUTOMATIC LIGHT AND FAN

POWER AND USB OUTLETS

DESIGNED BY CARL  
GUSTAV MAGNUSSON

**SPINNEYBECK | FILZFELT *Silent-Silo***

The felt-lined acoustic pod's clever circular form—measuring 48 inches across—maximizes functionality in a small footprint, offering a heads-down focus spot while softening sound in the surrounding space.

[spinneybeck.com](http://spinneybeck.com)





**STANDOUTS**ODOR AND MOISTURE  
PROTECTIONPERMANENT STAIN/SPILL  
RESISTANCE

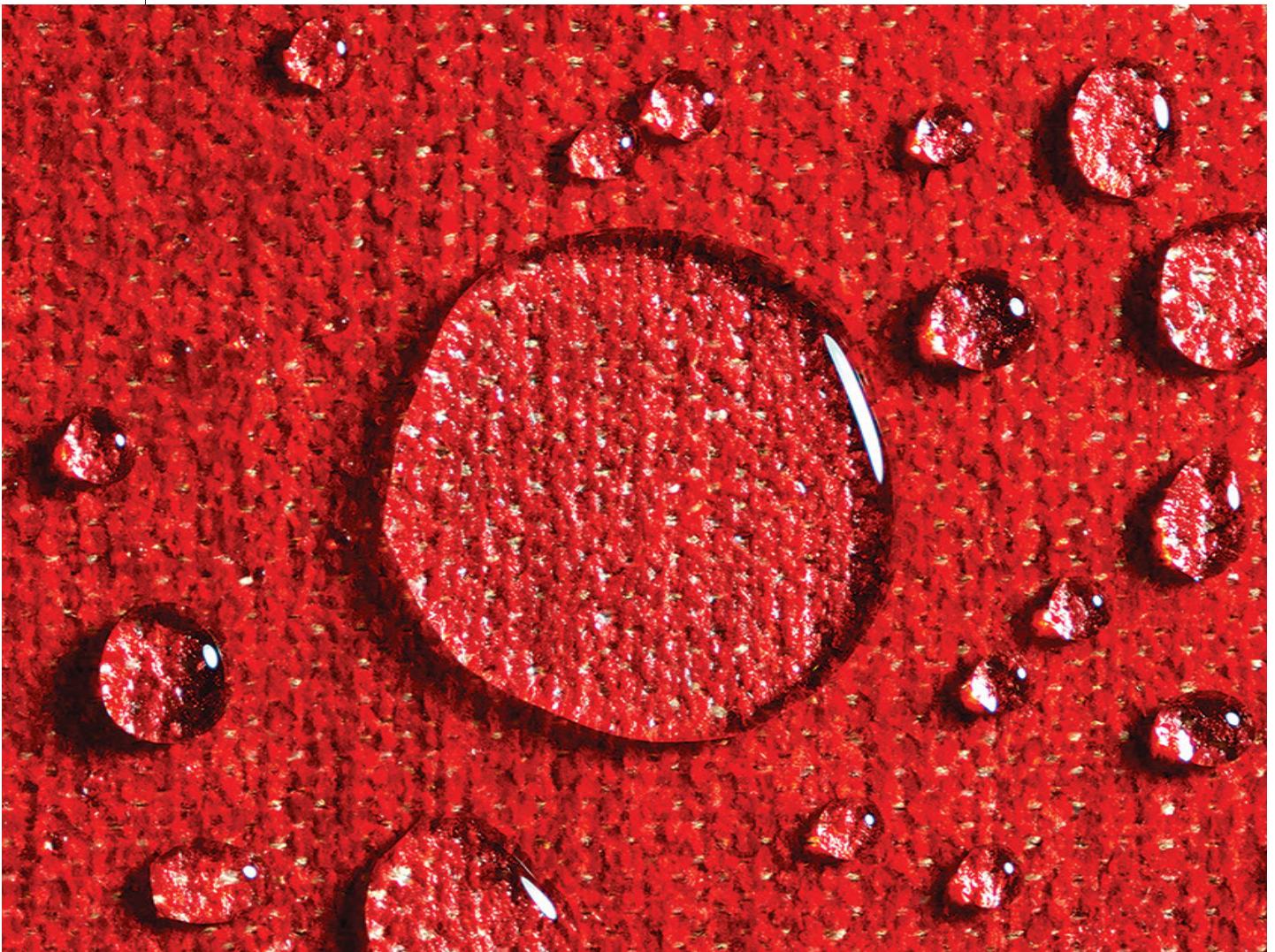
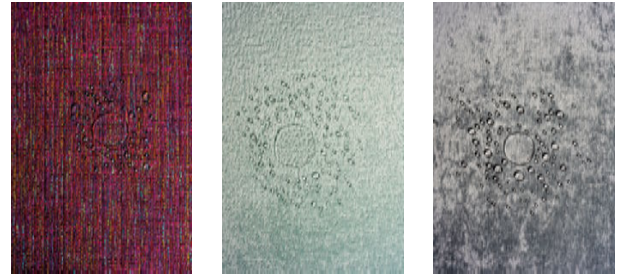
DISINFECTABLE

EASY CLEANUP

GREENGUARD GOLD

**CRYPTON FABRICS***Crypton Performance Fabrics*

The brand's beautiful, durable, and sustainable textiles are backed by EPA-approved disinfection and silver-ion antimicrobial protection, ensuring they'll meet today's challenges—and tomorrow's. [crypton.com](http://crypton.com)







**STANDOUTS**

LEATHER OR FABRIC  
UPHOLSTERY

16.75" OR 18.5" SEAT  
HEIGHT

DESIGNED BY ANDREAS  
ENGESVIK



**FOGIA *Bollo***

With generous cushions embracing a slim metal frame, the Swedish maker's comfy, cossetting chair is ideal for projects that call for something unique. Exclusively available through DWR.  
[dwrcontract.com](http://dwrcontract.com)





**STANDOUTS**

SOUND CHOICE BACKING  
FOR SUPERIOR ACOUSTICS

GREENGUARD GOLD

39% PRE-CONSUMER  
RECYCLED CONTENT

LUXURY VINYL TILE

**INTERFACE** *Brushed Lines*

Certified carbon neutral and fully recyclable, this high-end but chicly understated LVT offering has a diffused linear texture and an industrial look—and comes in 16 dusty hues. [interface.com](https://www.interface.com)





**STANDOUTS**

7 STYLES

LIGHTWEIGHT

CLEAR SATIN OR BLACK  
FINISH

**CORONA GROUP INC. *Intersection***

Standing unanchored to the wall, the presentation/divider system's anodized-aluminum frame can be customized with a variety of materials and components, from glass or porcelain marker-boards to acoustic felt. [coronagroupinc.com](http://coronagroupinc.com)



**STANDOUTS**

6 STYLES

PENDANT, SCONCE,  
AND CHANDELIER

OPTIONAL SHADES

**CRAFTMADE** *Tarryn*

Sculpted of satin brass and striking crystal, the streamlined and stately fixture comes with optional black shades whose soft gold lining casts a warm wash of light. [craftmade.com](https://www.craftmade.com)



**STANDOUTS**

USE INDOORS OR OUT  
16 COLORS AND FINISHES  
WON'T STAIN, CRACK, OR  
YELLOW



**CROSSVILLE, INC.** *Porcelain countertops*

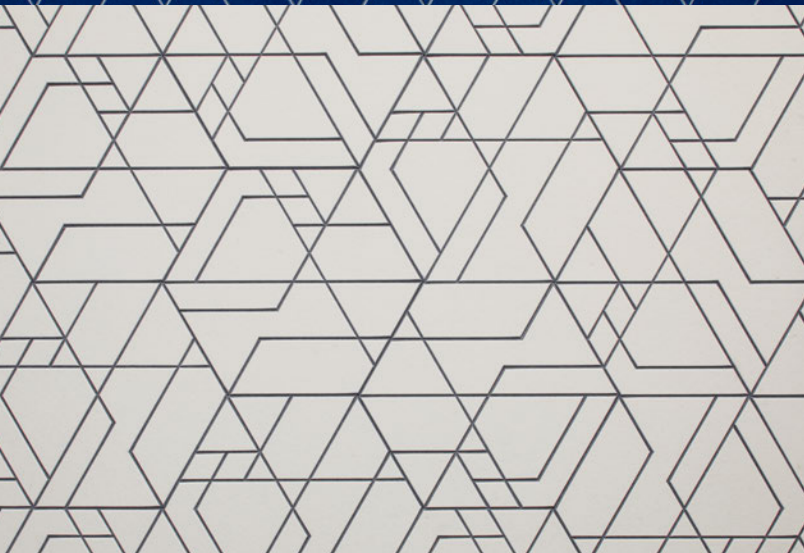
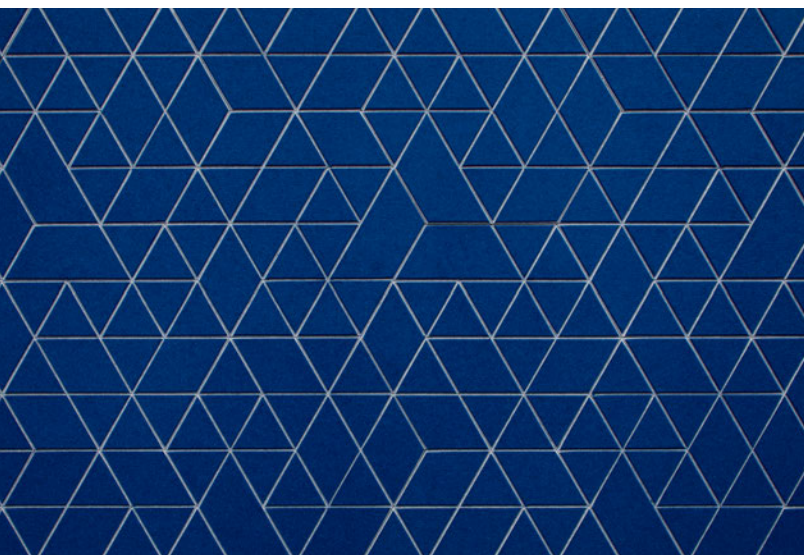
Elegant 12mm-thick porcelain slabs ideal for countertop installations offer all the advantages of tile—seductive looks and unparalleled durability among them.

*[crossvilleinc.com](http://crossvilleinc.com)*



**STANDOUTS**

V-GROOVE PATTERNING  
 100% WOOL DESIGN FELT  
 66 COLORS  
 0.50 NRC  
 DIRECT GLUE

**FILZFELT** *Hive*

Boasting a playful honeycomb form, the easy-to-install acoustic tile series by Bernd Benninghoff comes in three angular designs, which can be combined and configured in endless ways. [filzfelt.com](http://filzfelt.com)





#### STANDOUTS

DESIGNED BY ANDREAS  
OSTWALD

6 POLY COLORS

23 WOOD FINISHES

OPTIONAL UPHOLSTERED  
SEAT PAD

#### SOURCE INTERNATIONAL *Everwood*

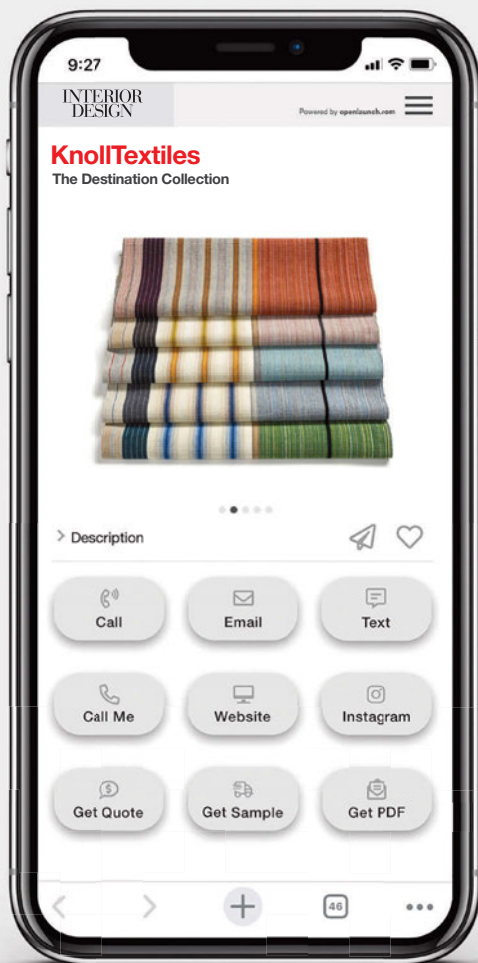
A clean-lined, Scandinavian take on the classic wood chair showcases the marriage (and minimalist use) of organic and manmade materials: solid ash and lightweight polypropylene.

[sourceinternationaldesign.com](http://sourceinternationaldesign.com)





# Designers are **loving LAUNCH.**



INTERIOR  
DESIGN

**LAUNCH**<sup>™</sup>



### INFINITY DRAIN *Slot Linear Drain*

Courtesy of a narrow 3/8-inch drainage gap, the linear unit disappears into its surroundings yet doesn't skimp on function, with an easily accessible clean-out tray. [infinitydrain.com](http://infinitydrain.com)



### PENTALQUARTZ *PentalQuartz*

Combining the beauty of stone with the superior durability of quartz composite, this low-maintenance surface material provides infinite design possibilities for applications ranging from countertops to tub surrounds. [pentalquartz.com](http://pentalquartz.com)



### U-LINE *U-Chill*

An LED-lit in-counter cooling cylinder crafted of hand-polished marine-grade stainless steel maintains the temperature of beverages while they're being enjoyed. [u-line.com/u-chill](http://u-line.com/u-chill)



### DOUG MOCKETT & COMPANY INC. *Privacy Screen Panel Bracket*

Available in three sizes, this easy-install aluminum bracket secures a sneeze guard or divider to a desk, concierge stand, restaurant booth—or anywhere needing privacy, signage, or delineation. [mockett.com](http://mockett.com)





### KASWELL FLOORING SYSTEMS

#### *Engineered End-Grain Oak Plank*

With each square measuring 7x7 inches and a plank length of 7 feet, the engineered flooring format has a top-center-cut layer of end-grain oak ideal for floors and custom millwork. [kaswell.com](http://kaswell.com)

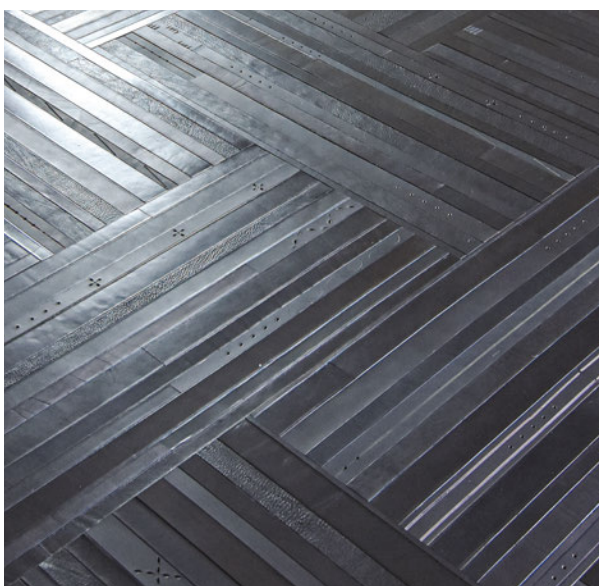
## HOW TO LAUNCH™

**ONE** pick your product

**TWO** tap the LAUNCH™ CODE

**THREE** take action

CALL THE REPRESENTATIVE / EMAIL / TEXT / GET QUOTE /  
ASK THEM TO CALL YOU / GO TO THEIR WEBSITE / GO TO THEIR INSTAGRAM /  
GET SAMPLE / GET PDF



### KELEEN LEATHERS, INC.

#### *STRAP'd Belting Leather Collection*

Create one-of-a-kind walls and floors with saddle/vegetable-tanned leather available in basic and warm neutrals. In two configurations: loose vintage-style belts and prefabricated panels, as shown. [keeleenleathers.com](http://keeleenleathers.com)



### TRUEFORM CONCRETE

#### *Outland 60" Concrete Vanity*

Handmade in the U.S., this vanity is a seamless synthesis of modern and rustic elements—from the distressed-wood shelf to the sturdy welded-steel base. [trueformconcrete.com](http://trueformconcrete.com)



**CAESARSTONE USA INC.**  
*405 Midday*

FROM THE SOLARIS  
OUTDOOR COLLECTION

STAIN-, WEATHER-, UV-,  
AND SCRATCH-RESISTANT

EASY TO CLEAN

BREAKTHROUGH  
TECHNOLOGY

